

# CM10

## Chilled Mirror Hygrometer



### FEATURES

- Precision Accuracy
- Two 4-20mA outputs (configurable)
- Durable
- Fast
- Duct/Pipe configuration
- Wall mount configuration
- OEM configuration
- Air temperature option for wall and OEM configuration
- Automatic balance function for the mirror/optical loop circuitry



### APPLICATIONS

- HVAC
- CLEAN ROOMS
- ENVIRONMENTAL CHAMBERS
- PHARMACEUTICAL
- INDUSTRIAL PROCESSES
- GLOVEBOX APPLICATIONS
- SEMICONDUCTOR
- DATA STORAGE
- HOSPITALS
- MUSEUMS
- BATTERY SYSTEMS

### The CM10

The CM10 series is a family of low-cost dew point chilled mirror transmitter that can be configured as a duct, wall, pipe, or an OEM unit. The unit offers stable, accurate and repeatable measurements that are traceable to NIST. Available air temperature option for wall and OEM configurations. Settable service cycles for balancing and cleaning the mirror. The CM10 is a primary measurement using a fundamental principle to measure the dew point very accurately. Simple maintenance to cleaning the mirror requires using a wetted cotton swab to restore the transmitter to normal operation. Because of its construction, the customer can enjoy a long life of excellent performance.

# CM10

## Chilled Mirror Hygrometer



### Technical Information

Measurement Ranges	Dew Point -20C (@25C) to 60C Dew Point-40C (@0C) Temperature (Optional) -40C to 120C
Hysteresis	None
Repeatability	+/- 0.05°C
Resolution	0.01 %
Supply Voltage	24Vdc +/-3V @ 1.0A
Analog Output scaled range Dew Point (4-20mA) User Selectable	(2) 4-20mA -24 Vdc (configurable) Factory set-both outputs, -20C to 60C (unless specified on order)
Operating Temperature	-40 °C to +60 °C
Weight	< 5lbs.
Air Velocity	50 to 900m/min
Pressure	2 ATM
Accuracy	Dew point +/-0.5C Temperature +/-0.5C

### Ordering Table (More configurations available upon request)

Model #	Description
CM10-D	Duct configuration (Dewpoint only)
CM10-W	Wall configuration (Dewpoint only)
CM10-W-T	Wall configuration (Dewpoint/Temperature)
CM10-OEM	OEM configuration (Dewpoint only)
CM10-OEM-T	OEM configuration (Dewpoint/Temperature)
CM10-P	Pipe Mount configuration (Dewpoint only)

CM10

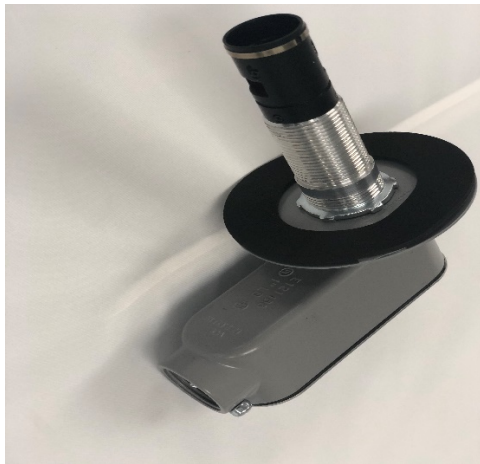
# Chilled Mirror Hygrometer



**OEM Configuration**



**Wall Mount Configuration**



**Duct Mount**



**Mirror view**